

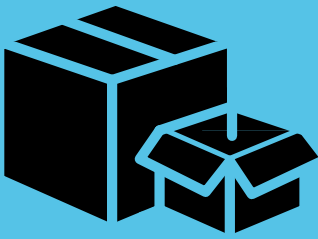


CENTRE OF EXCELLENCE

Victaulic Heads, Devices,
Valves & Flexibles

At Evalve we have been offering **complete pipeline solutions** for many years now. Operating nationally through our 2 locations, our fully stocked warehouses play a key role in distributing Pipe, Fittings, Valves, Brackets and Ancillaries across the north and south of England.

Our Basingstoke site is the ideal spot to furnish London and the surrounding areas with our market leading products into the **fire protection and fire sprinkler installation contractor sectors**.



NO MINIMUM ORDER VALUE ON HEADS, VALVES, & FITTINGS

We deliver your chosen quantities on our
FORS vehicles the very next day.

We can now offer fire sprinkler heads, monitoring switches, valves, and fittings **direct** from our warehouse in **much smaller order quantities**. There is **no minimum order value**, and the products can be ordered in **quantities of your choice up to 5pm for next day delivery**. Making it easier for you to plan your orders and top up any outstanding orders as and when you need to without the worry of over ordering or being left with surplus stock on site.

Experienced and knowledgeable, our customer service team are on hand to offer advice and support, accepting orders up to 5pm for next day delivery to site using our FORS accredited vehicles.

And the team don't just stop there, we know that aftercare service is equally as important, so our sales and purchasing teams work closely together to ensure your order is fulfilled as smoothly and quickly as possible.

FIRELOCK V2703/V2704 UPRIGHT, STANDARD & QUICK RESPONSE HEADS



- Available in brass, white and chrome finishes. Other finishes on request
- Available to suit temperature ratings of 57, 68, 79, 93, 141 & 182°C
- K Factor 80
- Nominal Thread Size - 15mm
- Max. Working Pressure: 175psi/1200 kPa
- Factory Hydrostatic Test: 100% @ 500 psi/3450 kPa
- Min. Operating Pressure: 7 psi/48 kPa



UL, ULC, VDS and LPCB Listed for fire systems.

FIRELOCK V2725/V2726 CONVENTIONAL, STANDARD & QUICK RESPONSE HEADS



- Available in brass, white and chrome finishes. Other finishes on request
- Available to suit temperature ratings of 57, 68, 79, 93, 141 & 182°C
- K Factor 80
- Nominal Thread Size - 15mm
- Max. Working Pressure: 175psi/1200 kPa
- Factory Hydrostatic Test: 100% @ 500 psi/3450 kPa
- Min. Operating Pressure: 7 psi/48 kPa



UL, ULC, VDS and LPCB Listed for fire systems.

FIRELOCK V3801/V3802 CONCEALED PENDANT Standard & Quick Response Heads



- K Factor: 5.6 Imp.
- Nominal Thread Size: 1/2" NPT/15mm w
- Max. Working Pressure: 175psi/1200 kPa
- Factory Hydrostatic Test: 100% @ 500 psi/3450 kPa
- Min. Operating Pressure: 7 psi/48 kPa
- Available to suit commercial and residential.
- V27 Flush Type Escutcheons
- V38 Concealed Cover Plates

V3801



UL, ULC, and LPCB Listed for fire systems.

V3802



FM Approved, UL, ULC, and LPCB Listed for fire systems.

FIRELOCK V2727/V2728 PENDANT, STANDARD & QUICK RESPONSE HEADS



- Available in brass, white and chrome finishes. Other finishes on request
- Available to suit temperature ratings of 57, 68, 79, 93, 141 & 182°C
- K Factor 80
- Nominal Thread Size - 15mm
- Max. Working Pressure: 175psi/1200 kPa
- Factory Hydrostatic Test: 100% @ 500 psi/3450 kPa
- Min. Operating Pressure: 7 psi/48 kPa



UL, ULC, VDS and LPCB Listed for fire systems.

FIRELOCK BUTTERFLY VALVES
Series 705 - Ductile Iron



FIRELOCK HIGH PRESSURE BUTTERFLY VALVES
Series 765 - Ductile Iron



FIRELOCK CHECK VALVES,
Series 717 - Ductile Iron



CODE	Size (mm)
V70550	50
V70565	65
V70580	80
V705100	100
V705125	125
V705150	150
V705200	200
V705250	250

- Sizes from DN50 - DN300/2 - 12"
- Pressures up to 300psi/2068kPa
- Weatherproof actuator housing approved for indoor or outdoor use
- Ductile Iron body and disc with Nitrile seats



FM Approved, cULus, VdS and LPCB Listed for fire systems.

CODE	Size (mm)
V76550	50
V76565	65
V76580	80
V765100	100
V765125	125
V765150	150
V765200	200
V765250	250

- Sizes from DN50 - DN300/2 - 12"
- Pressures up to 365psi/2517kPa
- Weatherproof actuator housing approved for indoor or outdoor use
- Ductile Iron body and disc with Nitrile seats



FM Approved, cULus, VdS and LPCB Listed for fire systems.

CODE	Size (mm)
V71765	65
V71780	80
V717100	100
V717150	150
V717200	200

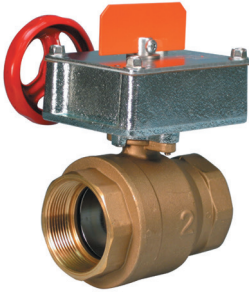
- Sizes from DN50 DN300/2 - 12"
- Pressures up to 365psi/25bar
- Can be installed in both horizontal or vertical positions



FM Approved, cULus, VdS and LPCB Listed for fire systems.

FIRELOCK BALL VALVES

Series 728 - Brass



CODE	Size (mm)
V72825	25
V72832	32
V72840	40
V72850	50

- Sizes from DN25 - DN50/1 - 2"
- Pressures up to 365psi/25bar
- Standard port, end entry valve
- Available with grooved or female threaded ends (NPT)



FM Approved, cULus, VdS and LPCB Listed for fire systems.

FIRELOCK OS & Y GATE VALVES

Series 771H - Ductile Iron



CODE	Size (mm)
V771H80	80
V771H100	100
V771H150	150
V771H200	200
V771H250	250

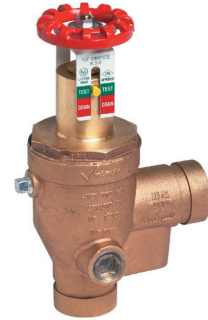
- Sizes from DN65 - DN300/2 1/2 - 12"
- Pressures up to 250psi/1725kPa
- Available Groove x Groove and Groove x Flange
- Features three internal parts, making the valves easy to maintain.
- Used when positive shut-off is required in a fire line and a quick visual indicator of open/closed position is required



FM Approved and cULus Listed for fire systems.

TESTMASTER II ALARM TEST

MODULE Series 720 - Bronze



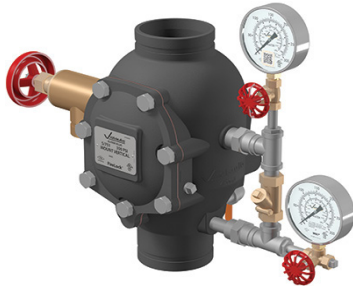
CODE	Size (mm)
V72050X32GRV	50
V92050X25BSP	50

- Sizes DN25 - DN50/ 1 - 2"
- Pressures up to 300psi/2065kPa
- Incorporates the test function and rapid drain function for wet sprinkler systems into a single unit
- Available with either NPT, BSPT female threaded ends or with grooved ends



FM Approved and cULus Listed for fire systems.

FIRELOCK ALARM CHECK VALVE Series 751 - Painted Black



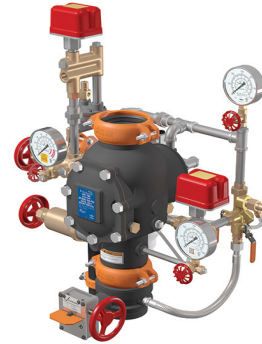
CODE	Description
V750150WET	165.1mm Wet Vertical Trim CE/VdS

FIRELOCK NXT DRY VALVE Series 768N



CODE	Description
V768150DRY	165.1mm 776 Low Pressure Actuator VQR CE/LPCB/UL/FM

PREACTION ALARM VALVE Series 769N



CODE	Description
V769D150PRE	165.1mm FireLock NXT DI PNU/ELC 767 LPA VQR Redundant Solenoid Low Water Pressure Switch

CLAPPER SEAL KITS



CODE	Description
V1751150	165.1-168.3 mm Series 751-756-758-768-769 with Cover Gasket

FIRELOCK BUTTERFLY VALVE (Supervised Closed) Series 707C



CODE	Description
V707150	165.1mm Black EPDM

FIRELOCK WATER MOTOR ALARM Series 760



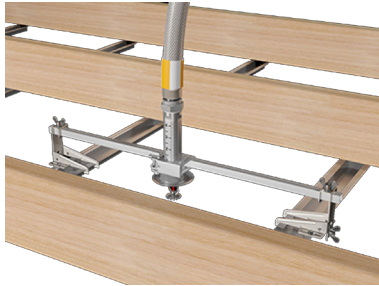
CODE	Size (mm)
V760ALARM	20

- Sizes DN20/3/4"

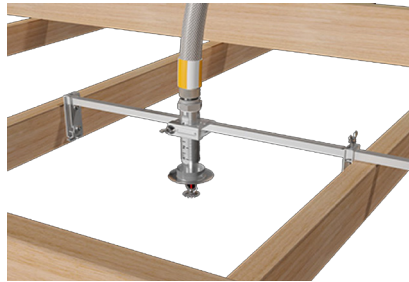


FM Approved, cULus, CE and VdS Listed for fire systems.

VICFLEX STYLE AB4 BRACKETS



VICFLEX STYLE AB7 BRACKETS



**VICFLEX BRAIDED FLEXIBLE HOSE
SS304 - Series AH1**



CODE	Description
VFAB4610	24 Inches/610mm Open Gate Adjustable Hat Flipper Assembly

CODE	Description
VFAB7700	27 1/2 Inches/700MM Adjustable Subassembly
VFAB71400	1400mm Adjustable Subassembly 1-Bee

CODE	Description
VF122032X15AH1	1220mmxDN15/ 48"x1/2" only BSPF/ BranchLine Nipple = DN32 (1 1/4") - UK 32mm Nipple
VF122025X15AH1	1220 mm x DN15/48x1/2" Outlet BSPT/ w/146mm/5.75" Straight Reducer wo/Bracket

VICFLEX BRAIDED AH2 HOSE



CODE	Size (mm)
VF79032X15	31/790
VF91432X15	36/915
VF122032X15	48/1220

- Braided AH2 Hose only BSPF/ BranchLine Nipple = 32mm

evalve

www.evalve.co.uk

Evalve Ltd Basingstoke
Unit J The Loddon Centre,
Wade Road,
Basingstoke,
Hampshire, RG24 8FL

Tel: 01256 479000
Email: sales@evalve.co.uk

Evalve Ltd Bredbury
Unit 7, Southside,
Bredbury Parkway Industrial Estate,
Bredbury,
Stockport, SK6 2SP

Tel: 0161 430 4555
Email: sales@evalve.co.uk